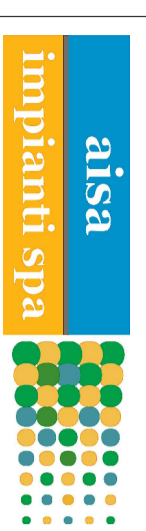


# Regione Toscana

Progetto di riposizionamento dell'impianto di recupero integrale di rifiuti di San Zeno, Arezzo  
PUT



Comittente  
AISA Impianti S.p.A.  
Indirizzo  
Strada vicinaria dei Morli, loc. San Zeno 52100 Arezzo

Progettista  
Arch. Giulio Romano  
Gestione Ambientale s.r.l.

Indirizzo  
Via Trento e Trieste 52100 Arezzo

Data  
Gennaio 2020

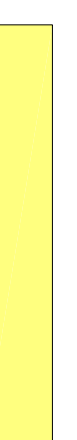
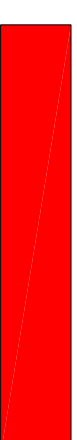
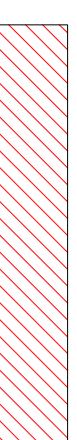
Torcedo  
Profili di scavo e riempimento edifici

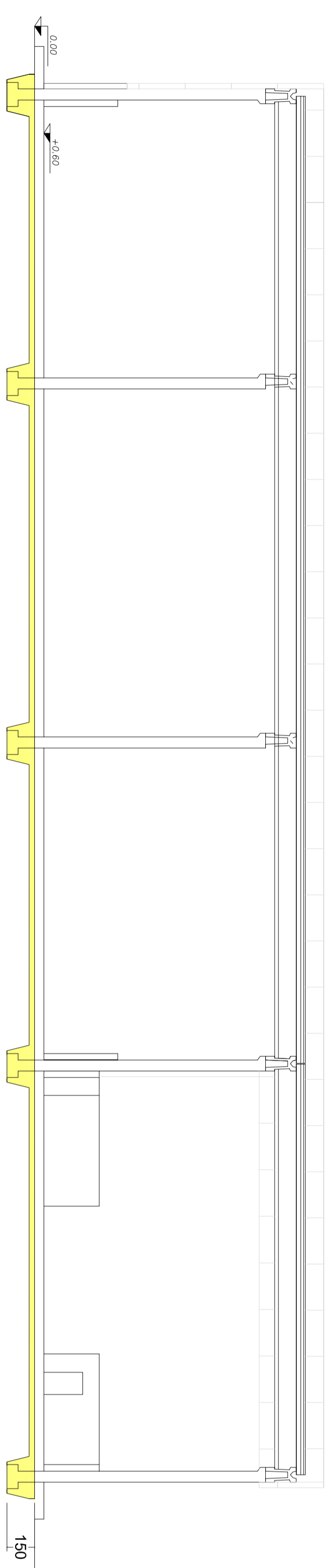
Scala  
1:200

Fornito  
AD

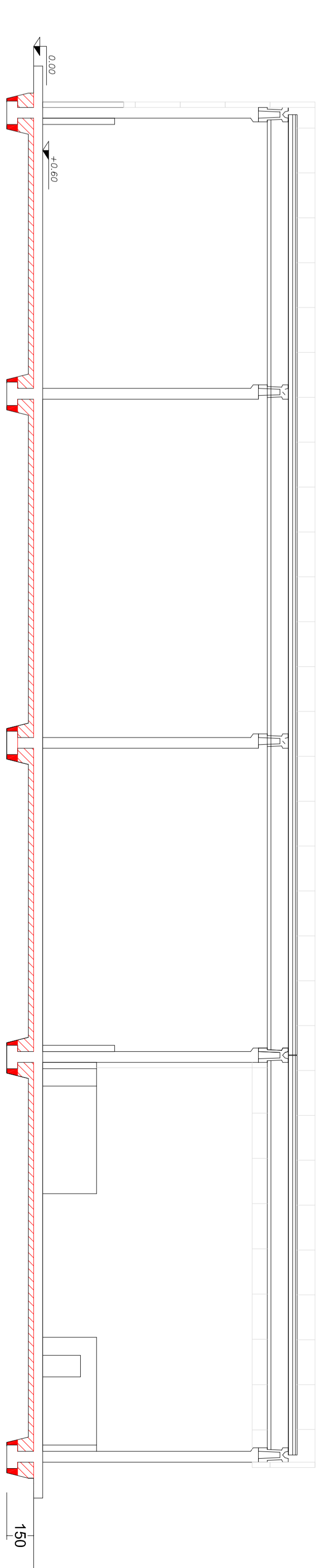
REVISIONE APRILE 2020

TAVVA

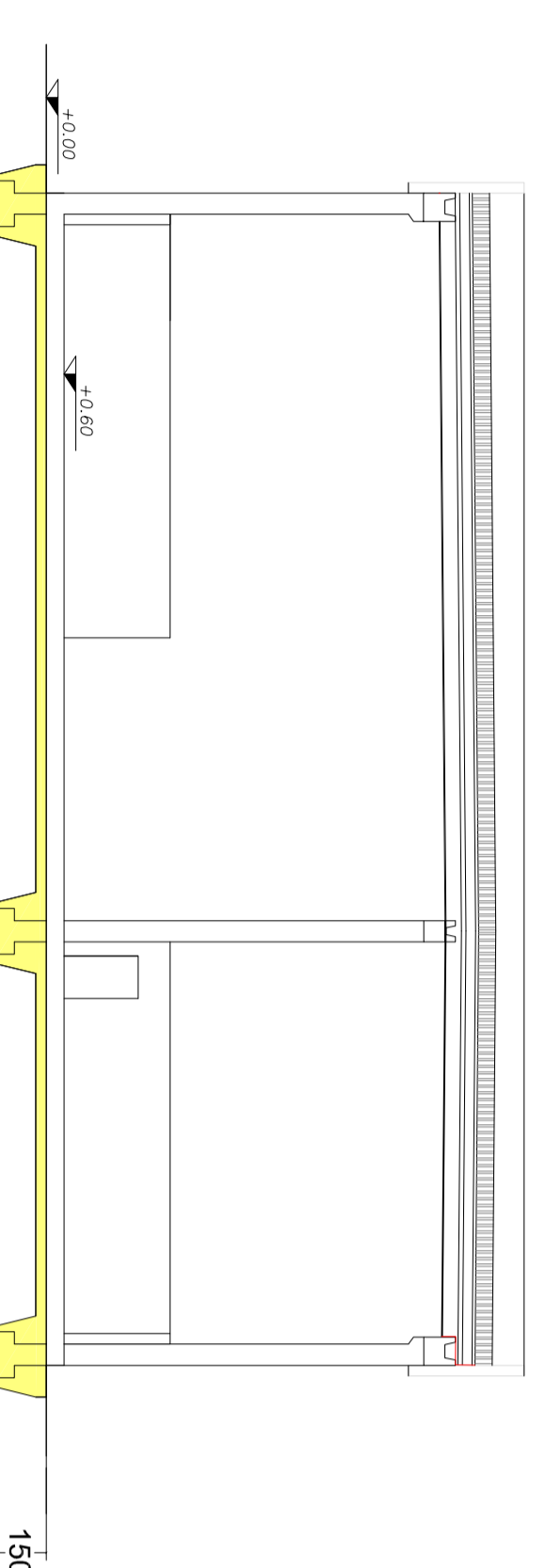
-  Scavo
-  Riempimento con terre e rocce da scavo pifini 50 cm di scavo o sezione obbligata
-  Riempimento con misto ricicciato stabilizzato



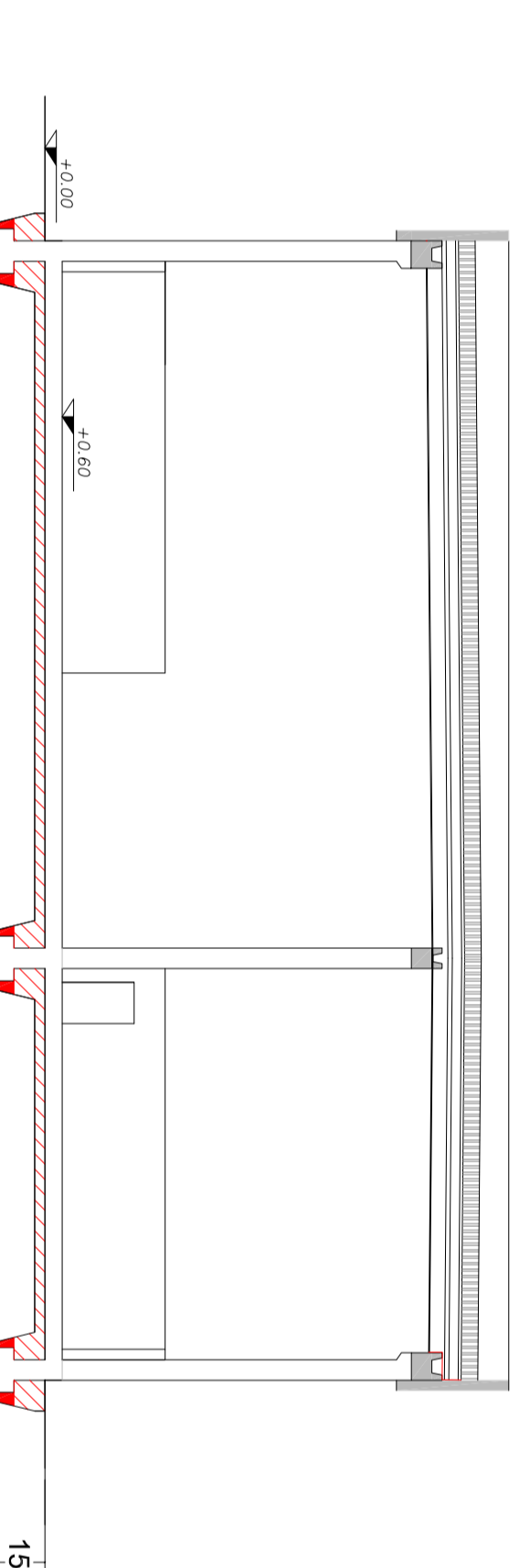
Scavo Fabbrica di materia



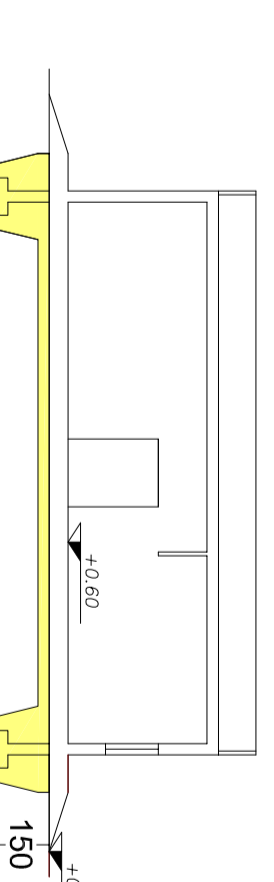
Riempimenti Fabbrica di materia



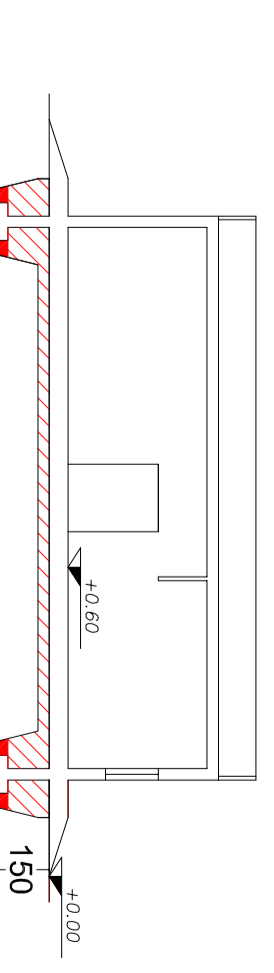
Scavo Tettoia



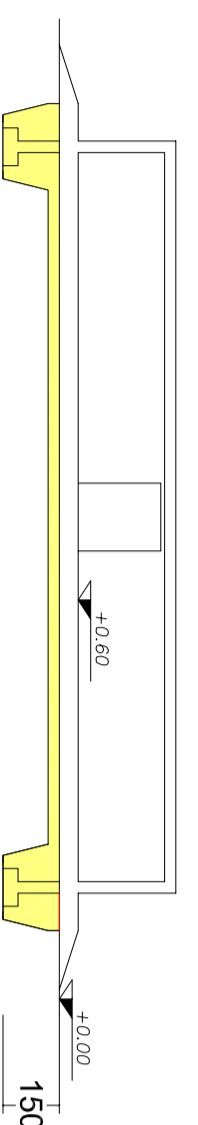
Riempimento Tettoia



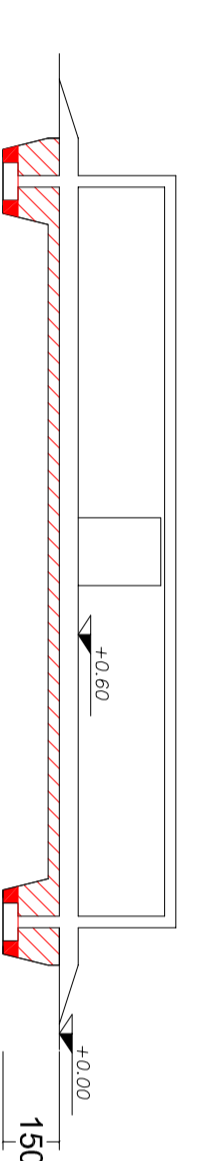
Scavo nuova pesa



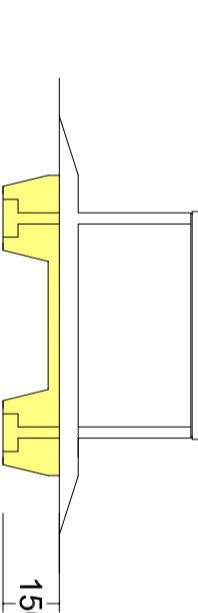
Riempimento nuova pesa



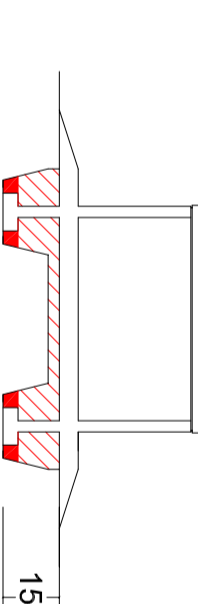
Scavo Upgrading



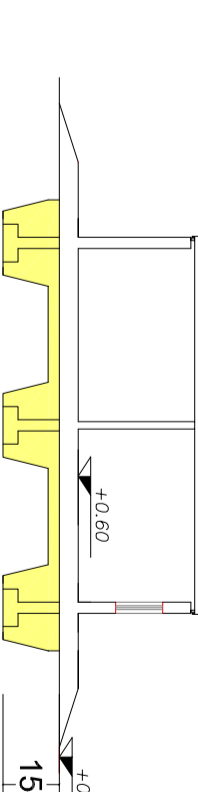
Riempimento Upgrading



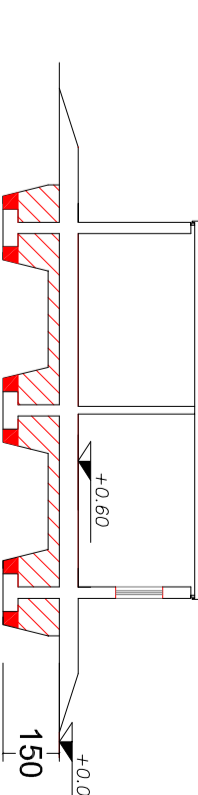
Scavo cab.elettrica



Riempimento cab.elettrica



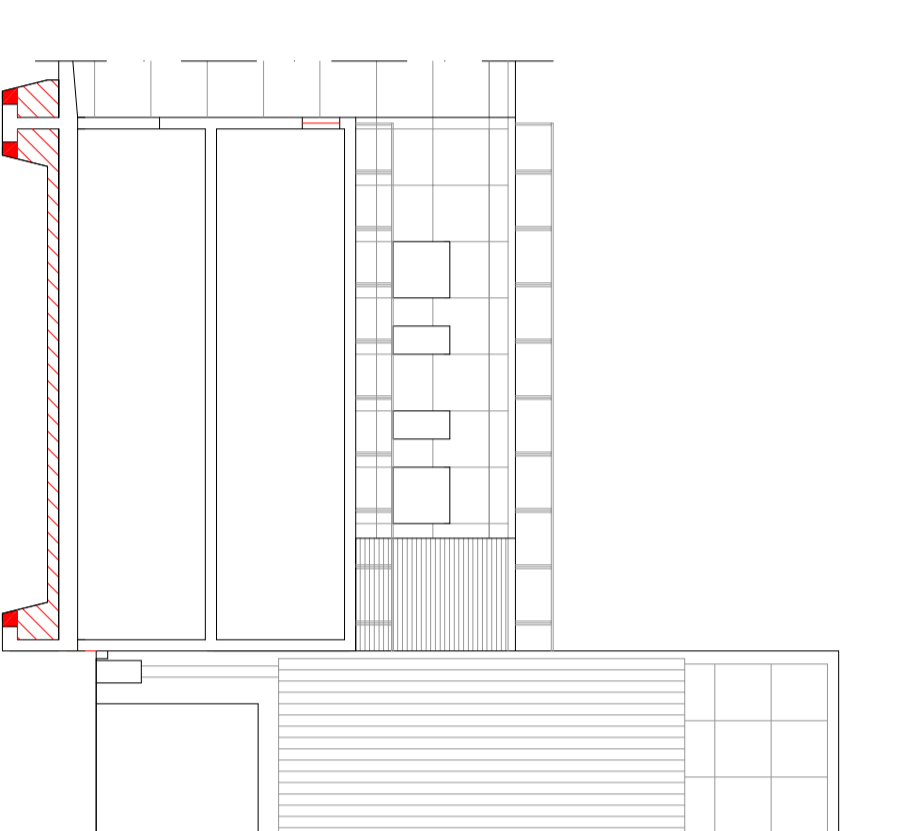
Scavo cab.regolazione



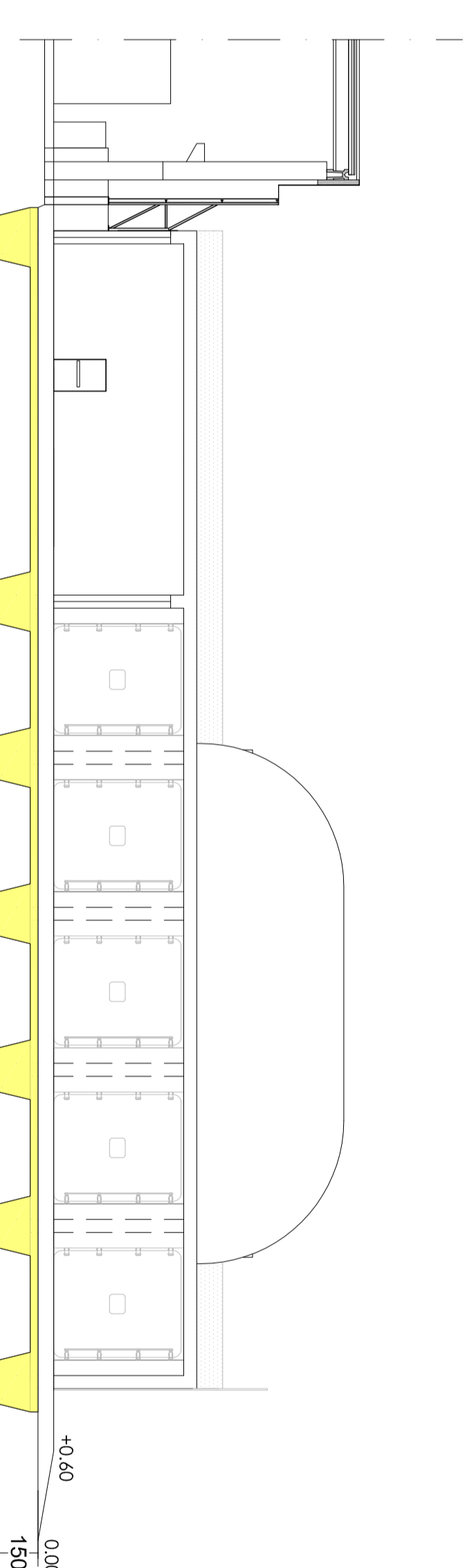
Riempimento cab.regolazione



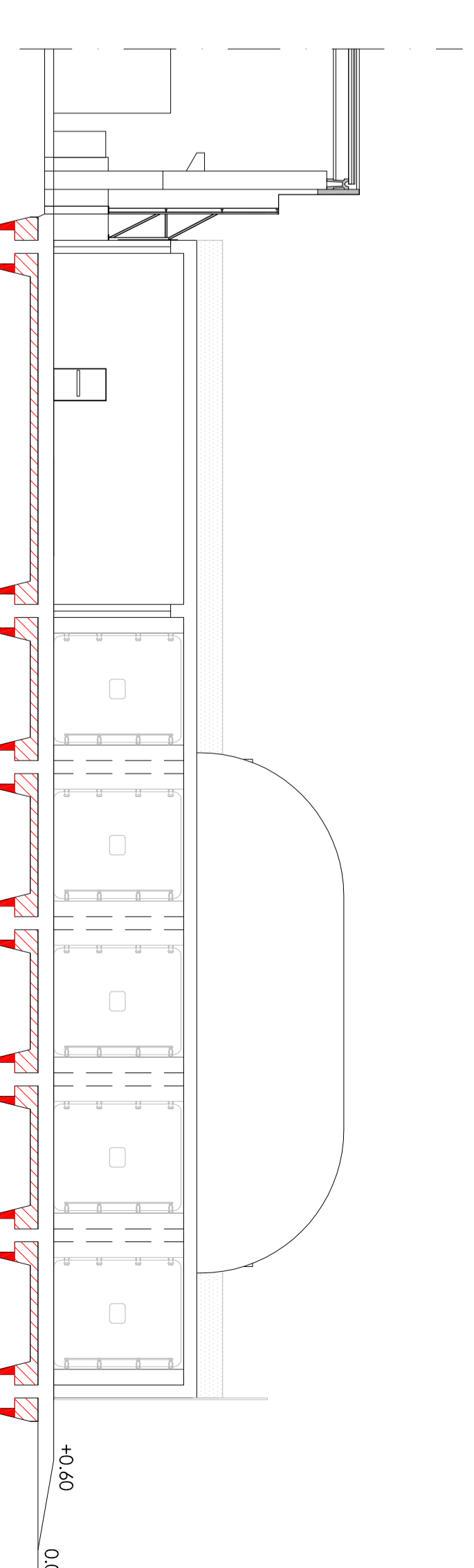
Scavo ampliamento Pal.Uffici



Riempimento ampliamento Pal.Uffici



Scavo digestore anaerobico



Riempimento digestore anaerobico